

CROSSING!

Integrating highway A65
in the territories it crossed as best as possible

An Open door on NOISE

When building highway A65, A'LIENOR set up a number of measures to protect the highway's neighbors from the noise pollution caused by passing traffic.

About
22 000 m
of acoustic protection

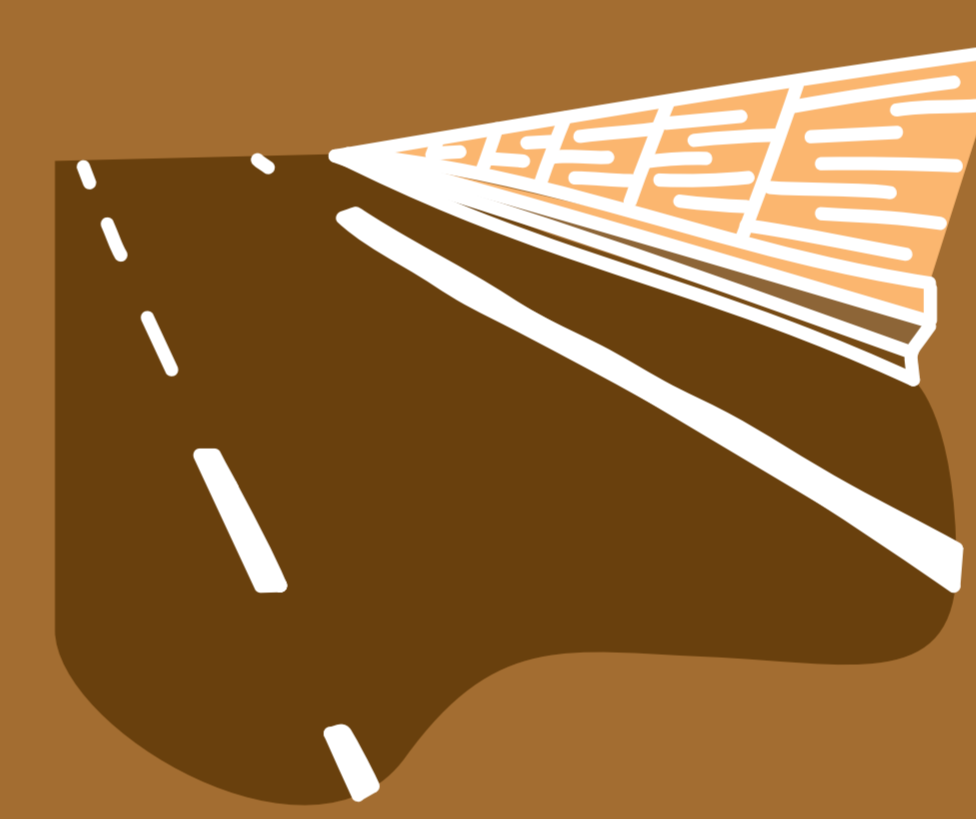
from
1.5 m
to
5 m
high

81 RAISED
BARRIERS
over 17,5 km



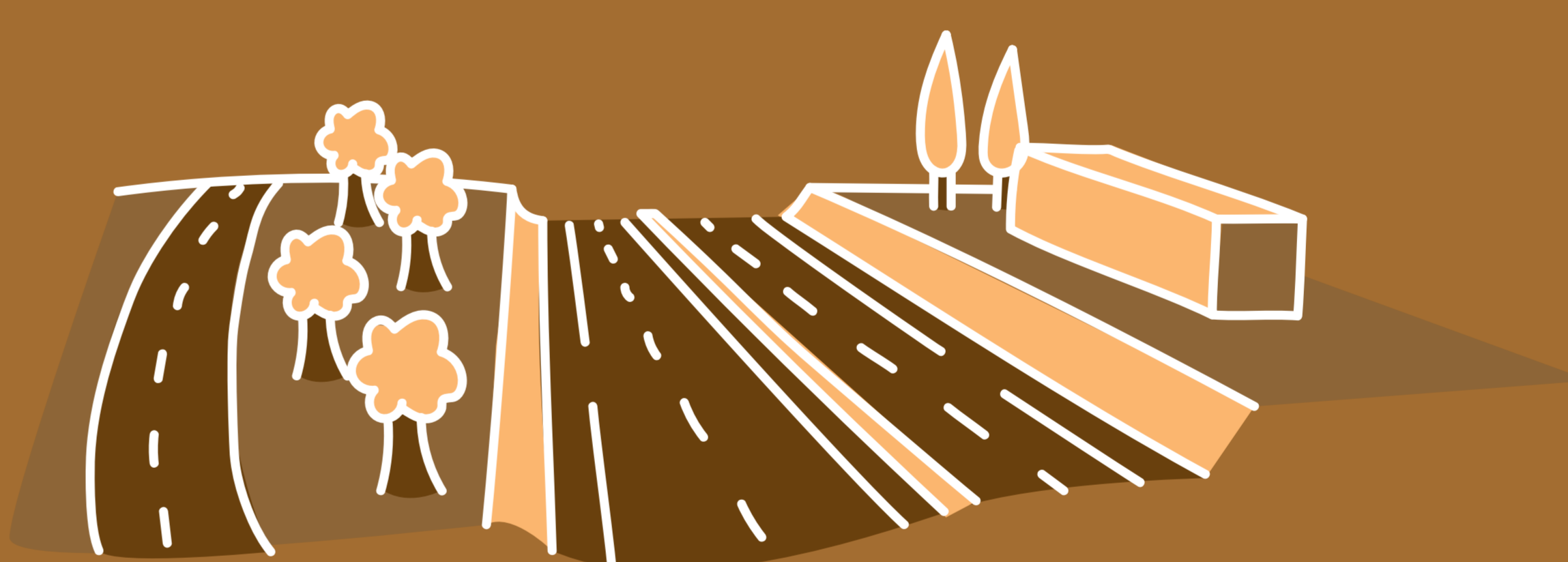
A structure consisting of an earth embankment or dyke. Built inside of the motorway fences in order to reduce traffic noise.

25 ANTI-NOISE
SCREENS



Used when the roadway is affected by the **proximity of buildings**.

4 FAÇADES
INSULATED
=
installation of double glazing



Natural protection induced by the highway geometry, built below natural ground level.

Management
At present, survey results confirm the **efficiency of these measures**.

