

# CROSSING!

Integrating highway A65  
in the territories it crossed as best as possible

## Open door on the A65

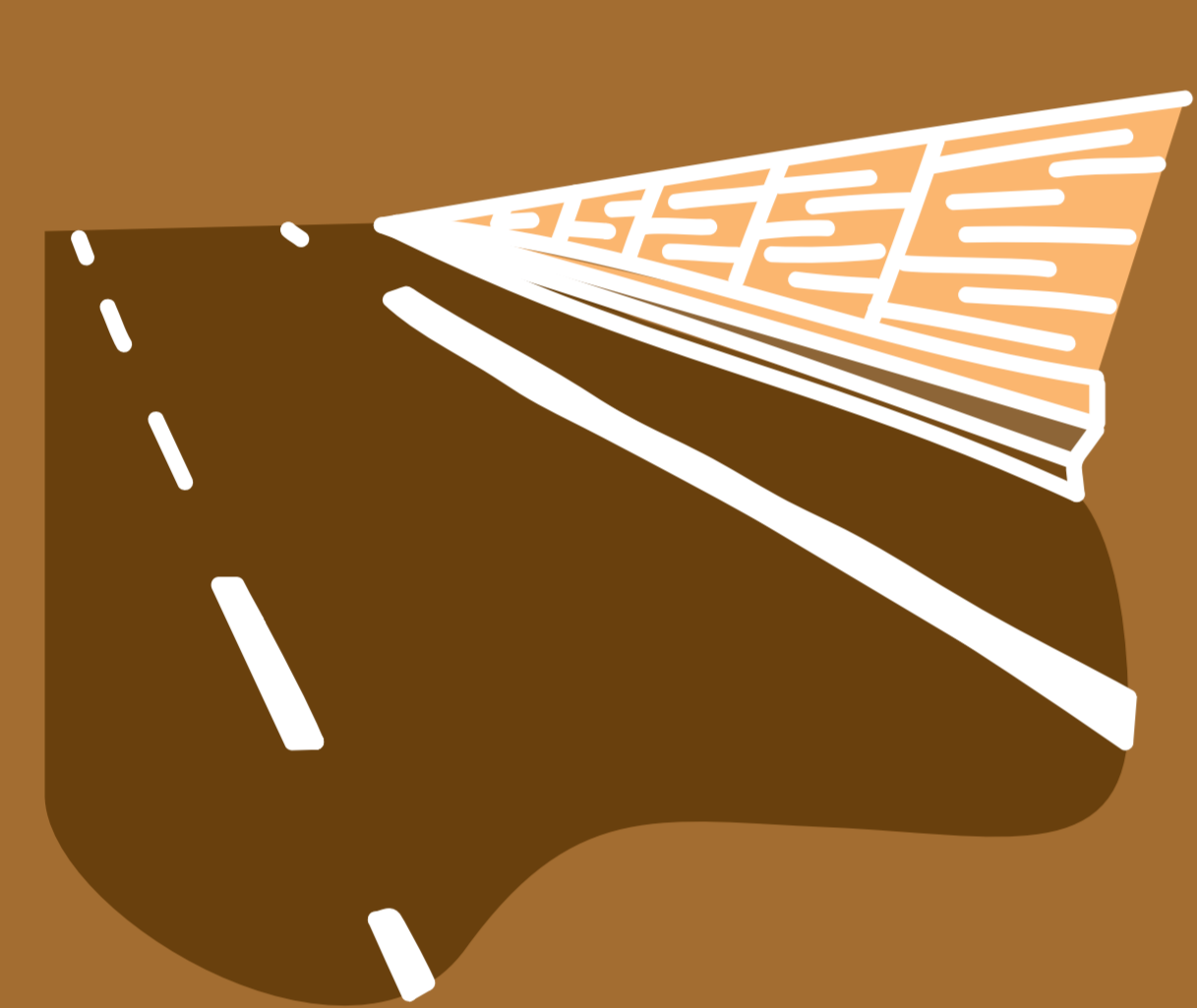
Highway A65,  
the first highway since the  
Grenelle Environment  
agreement designed and  
built to respect the social  
context and ecological  
issues at stake in the  
territories it goes through.  
This ambition is realized by  
diverse protection features:

### An open door on **NOISE**

Protecting the neighborhood  
against noise pollution.

**22.000 m**

anti-noise protection  
from 1 to 5 meters high.



### An open door on **ECOSYSTEMS**

Measures designed to maintain  
protected environments

**1.375**

hectares  
of natural areas  
managed by a  
specialized operator,  
CDC Biodiversité.



### An open door on **BIODIVERSITY**

Caring for protected species  
and their natural habitat.

**314**

road-crossing structures  
and more than 300 kilometers  
of protective fencing.

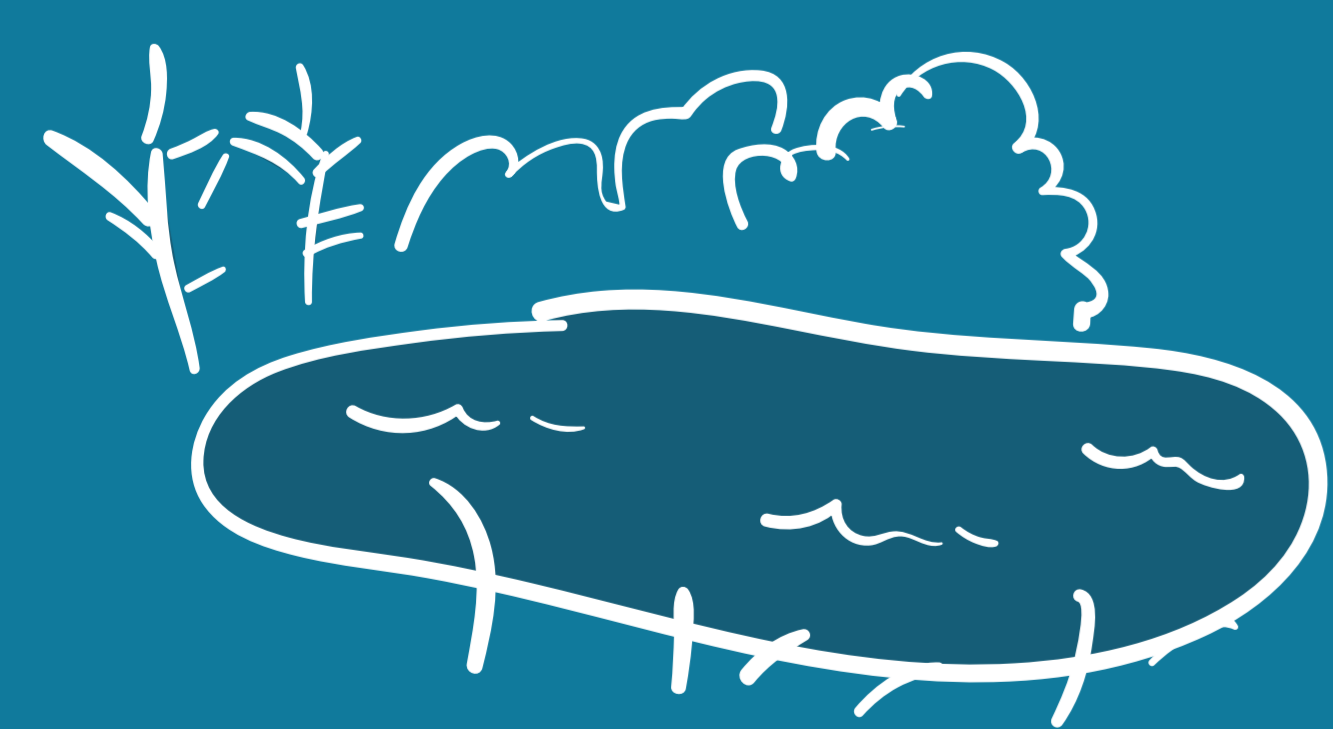


### An open door on **WATER**

The conservation  
of water resources.

**419**

hydraulic structures.



### An open door on the **LANDSCAPE**

The valorization  
of natural resources  
and the architectural heritage  
in surrounding towns.

**106**

renovation and development  
projects approved by the  
Government in departments 64,  
40 and 33 (Pyrénées Atlantiques,  
Landes, Gironde).

